

# Available For Lease

**Chehalis**  
**1286 NW Maryland Avenue**

**Location:** Chehalis, WA  
**Contact:** Rachael Jennings, Bill Lotto  
Lewis County EDC  
**Phone:** (360) 748-0114  
**Fax:** (360) 748-1238  
**Email:** lewisedcbl@localaccess.com

## General Information

**Building Size:** 5,194 sf

**Building Type:** Industrial/  
Commercial

**Power:** Public Utility District

**Water:** City

**Sewer:** City

**Zoning:** Industrial

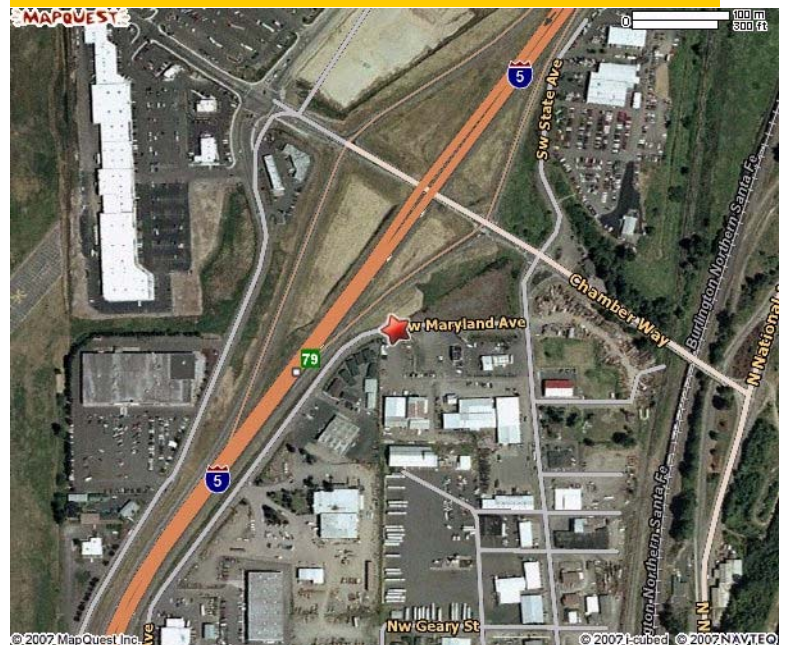
**Parcel Size:** 3 acres

## Listing Comments

- **Broadband**
- **Available space for lease starting 3/29/06**
- **\$0.43 square foot**
- **Easy access to I-5**



## Site Map



## Lewis County Economic Development Council

P.O. Box 916 Chehalis, WA 98532  
(360) 748-0114 | lewisedc.com  
Lewisedcbl@localaccess.com